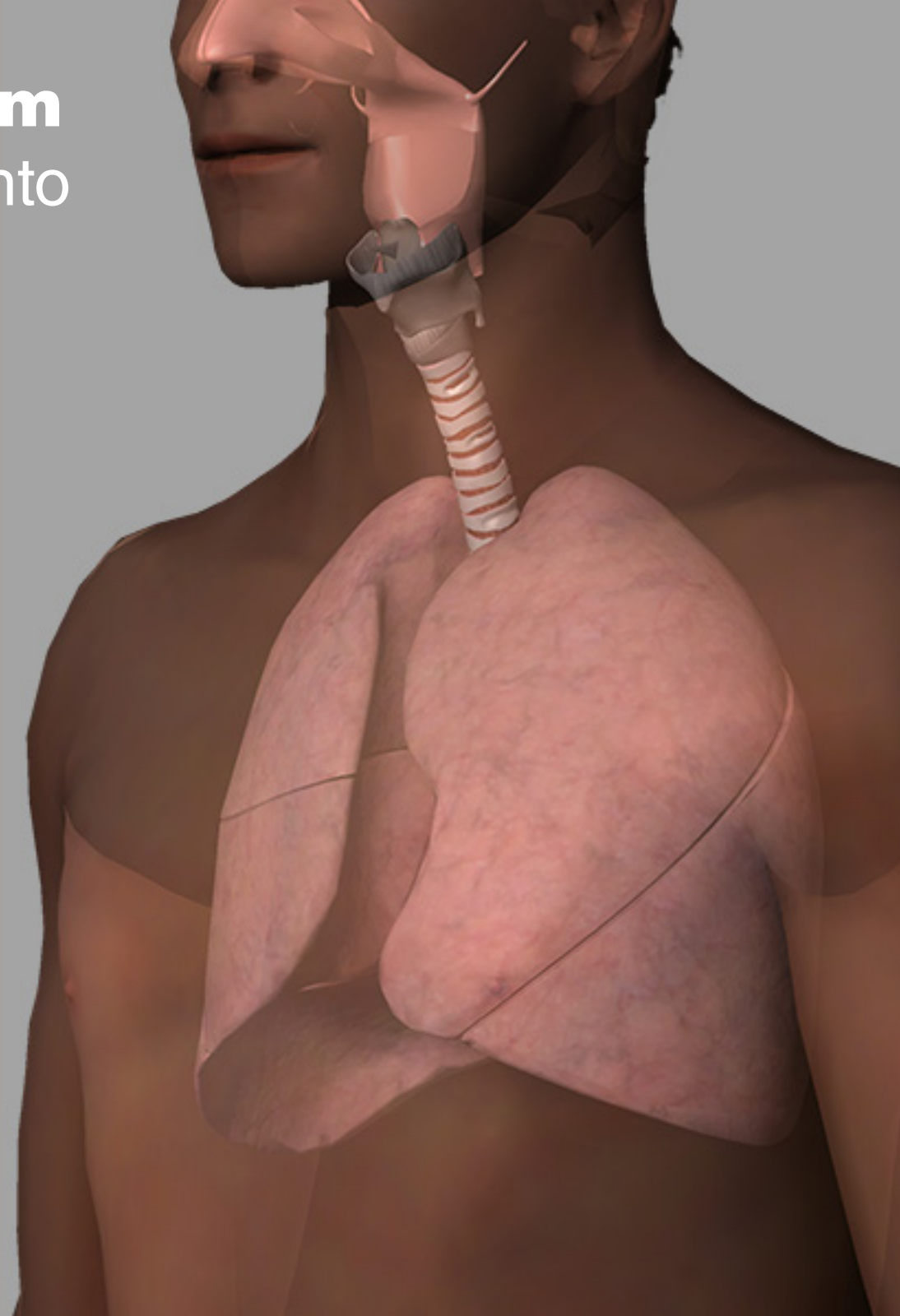


The **Respiratory System** does more than move air into and out of your lungs.

The structures of the respiratory system interact with structures of the skeletal, circulatory, nervous, and muscular systems to help you smell, speak, and move oxygen into your bloodstream and waste out of it.

Let's take a look!



Share this slideshow!



[www.visiblebody.com](http://www.visiblebody.com)



The **skeletal system** provides structure to soft tissue in the upper respiratory tract.

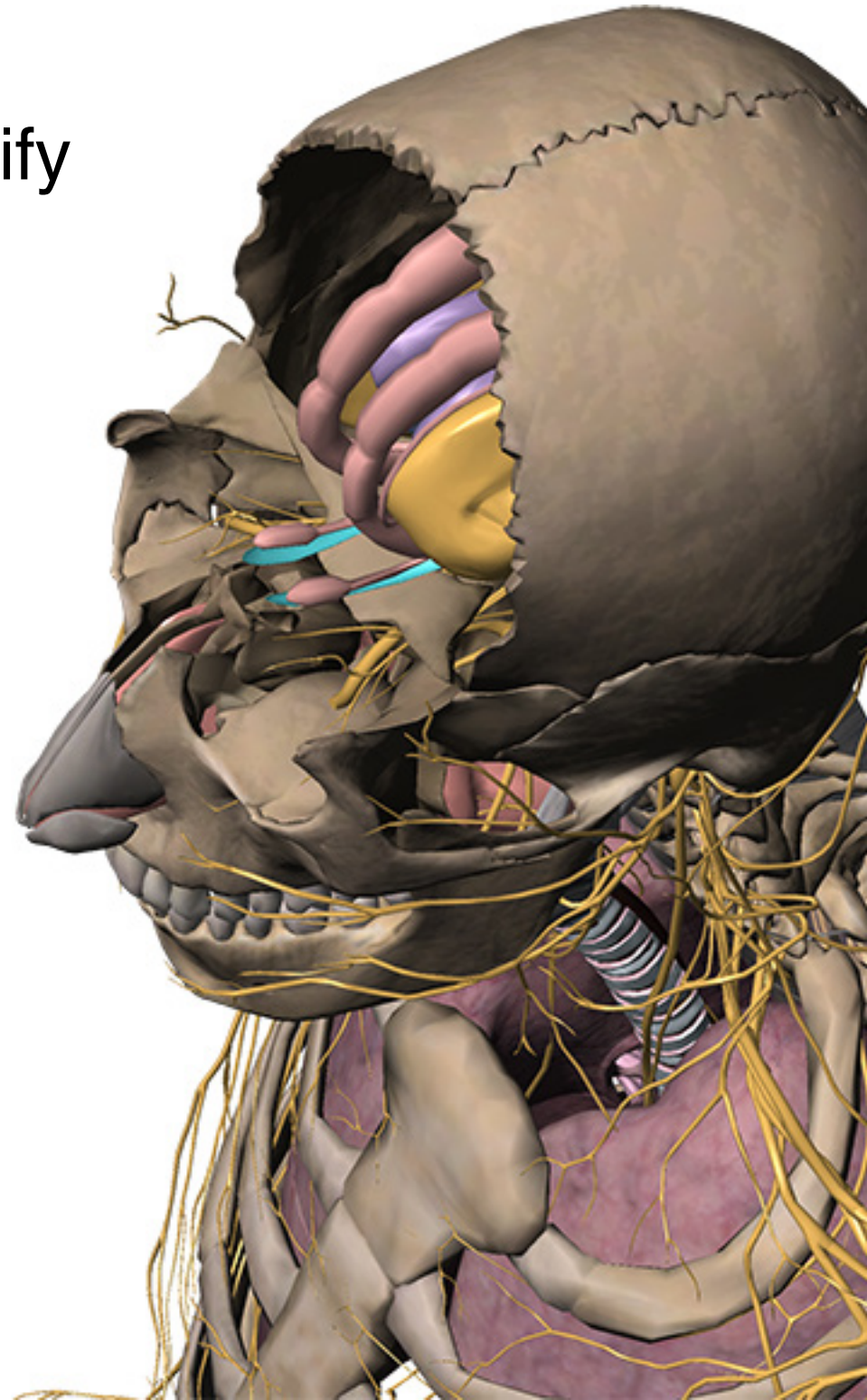
The **perpendicular plate** of the **ethmoid** (the long section, shown in blue) separates the nasal cavity into sides.

The perpendicular plate is one of the structures that help form the **nasal septum**.

The respiratory and nervous systems work together to identify odors in your environment.

The respiratory system communicates with the nervous system through foramina in the ethmoid bone.

The **olfactory bulbs** (pink structures above the olfactory nerves) receive input from the **olfactory nerves** and pass it along to the brain, which processes and determines the odor.

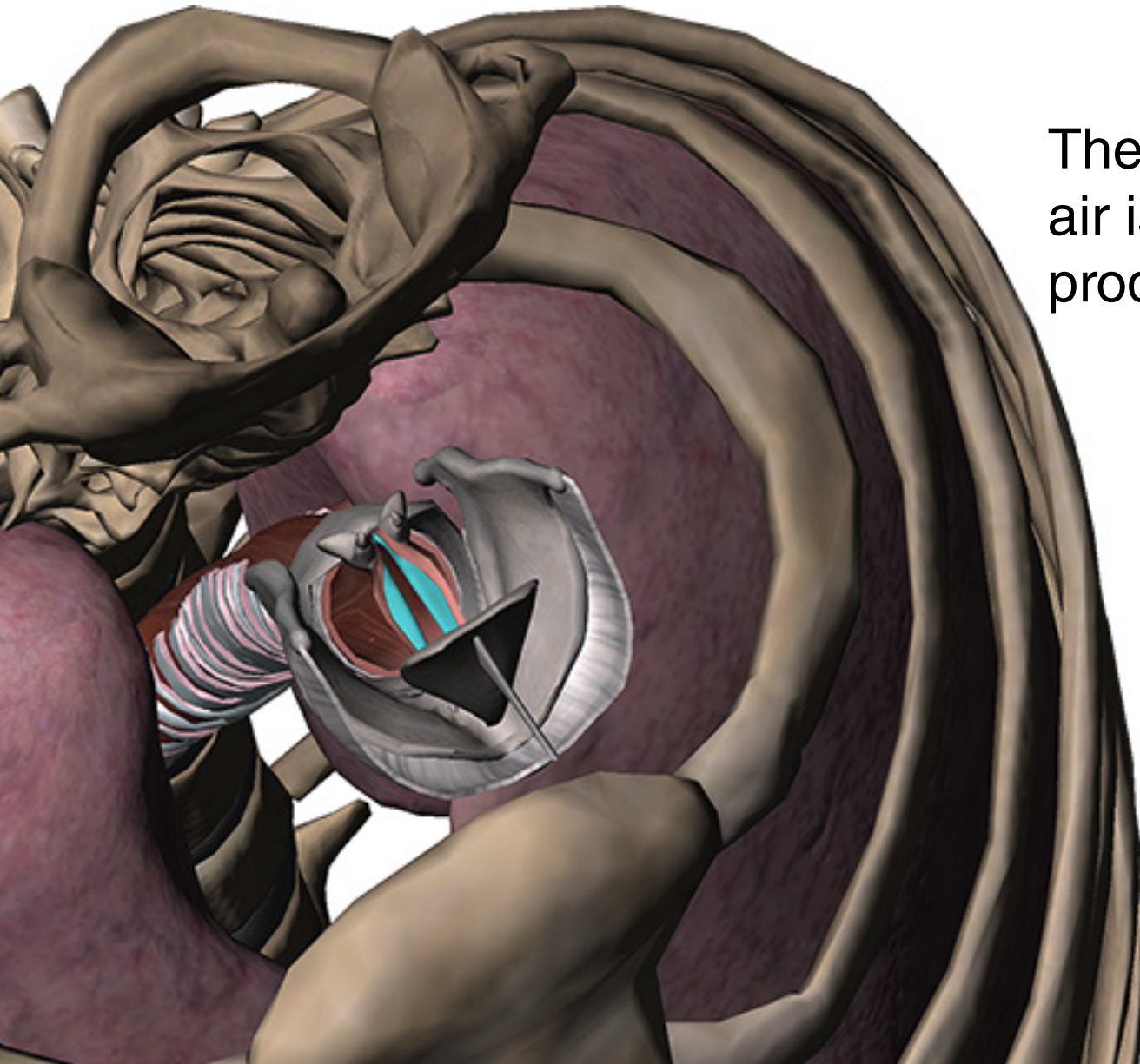


Share this slideshow!



[www.visiblebody.com](http://www.visiblebody.com)

The structures highlighted in blue and supported by the laryngeal skeleton are the **true vocal folds** (or vocal cords).



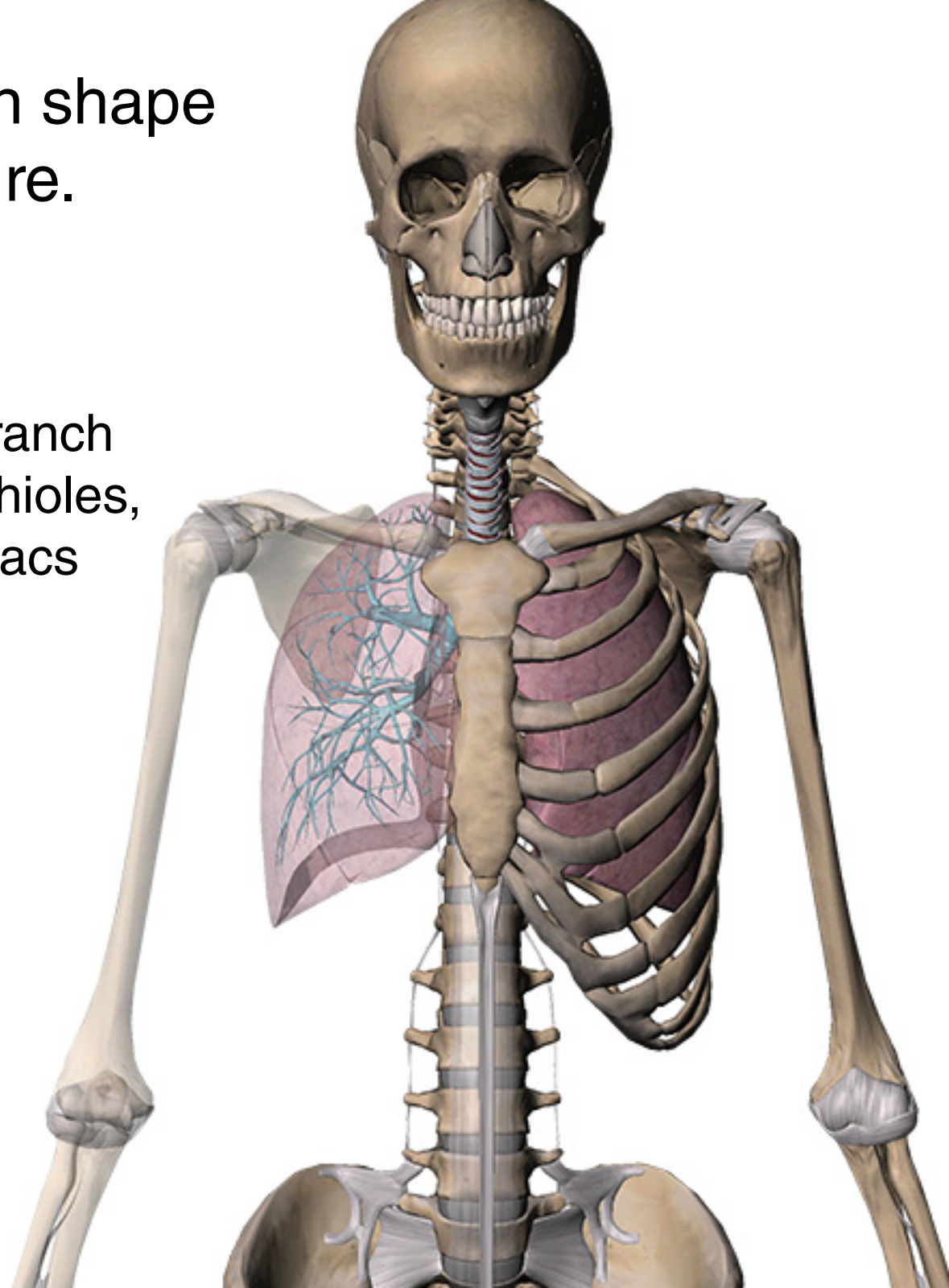
The vocal folds vibrate when air is passed over them, producing sound.

**Factoid:** The sinuses in the skull, the thickness of the vocal folds, and the resonance area of the throat give each person's voice its own character.

The **lungs** are conical in shape and have a spongy texture.

The branching structure is the **respiratory tree**; bronchi branch into smaller and smaller bronchioles, each ending in millions of air sacs known as **alveoli**, where gas exchange occurs.

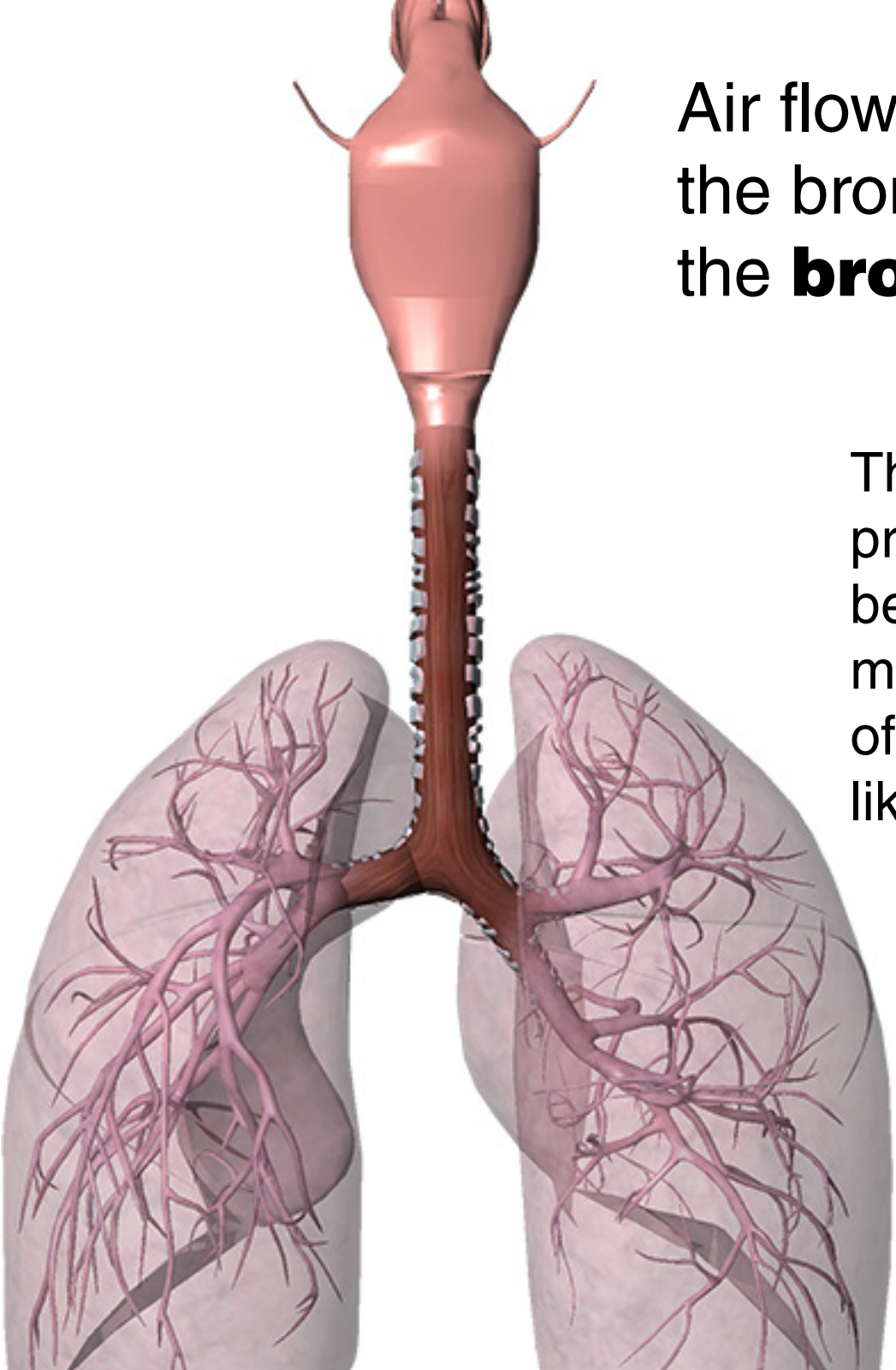
**Factoid:** The surface area of one lung is 750 sq feet. That is the size of a singles tennis court!



Share this slideshow!



[www.visiblebody.com](http://www.visiblebody.com)

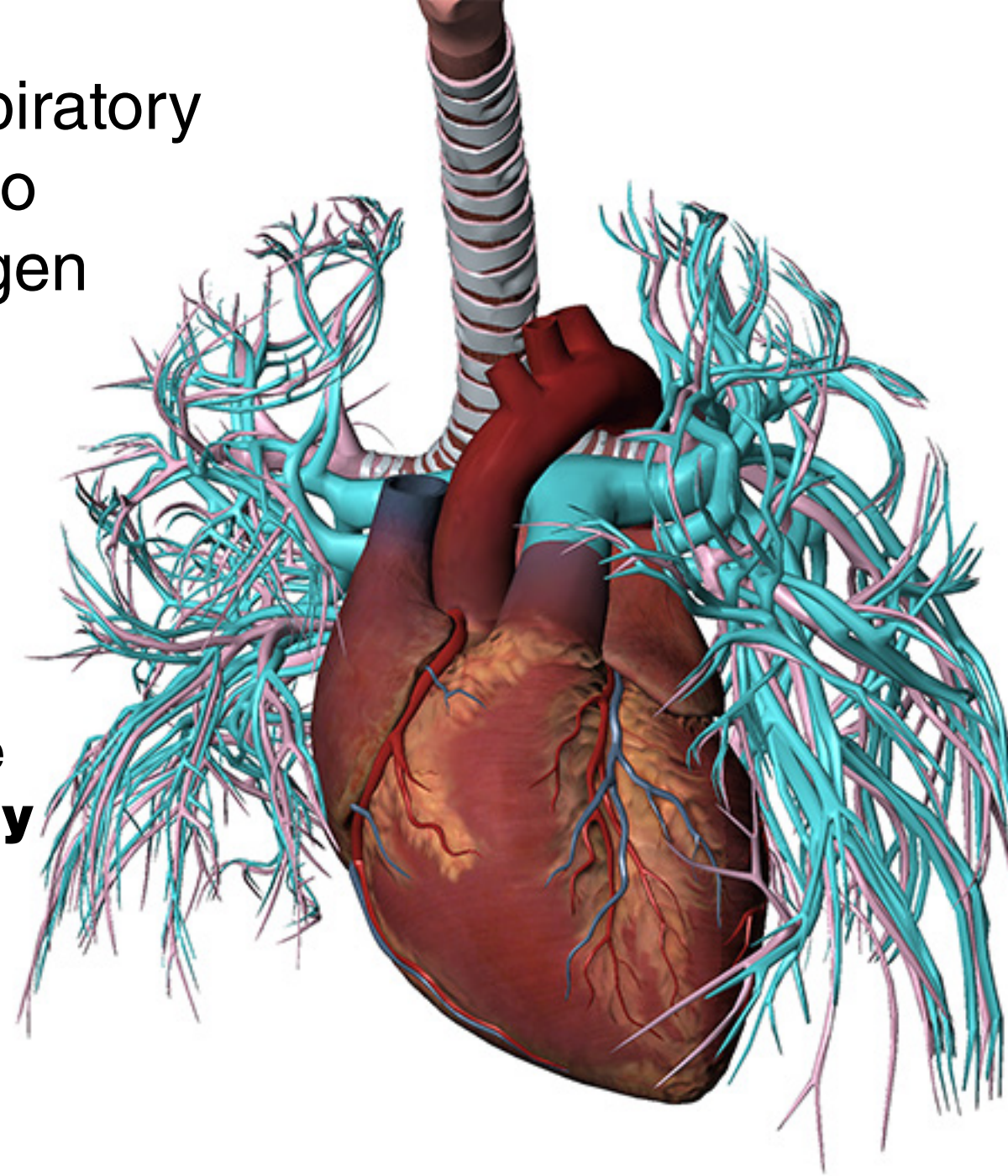


Air flows from the trachea into the bronchi, and from there into the **bronchioles** of the lungs.

The shallower angle of the right primary bronchus is important, because when food accidentally moves down the trachea instead of the esophagus, it's much more likely to end up in the right lung.

The circulatory and respiratory systems work together to circulate blood and oxygen throughout the body.

Air moves in and out of the lungs through the trachea, bronchi, and bronchioles. Blood moves in and out of the lungs through the **pulmonary arteries and veins** that connect to the heart.



Share this slideshow!

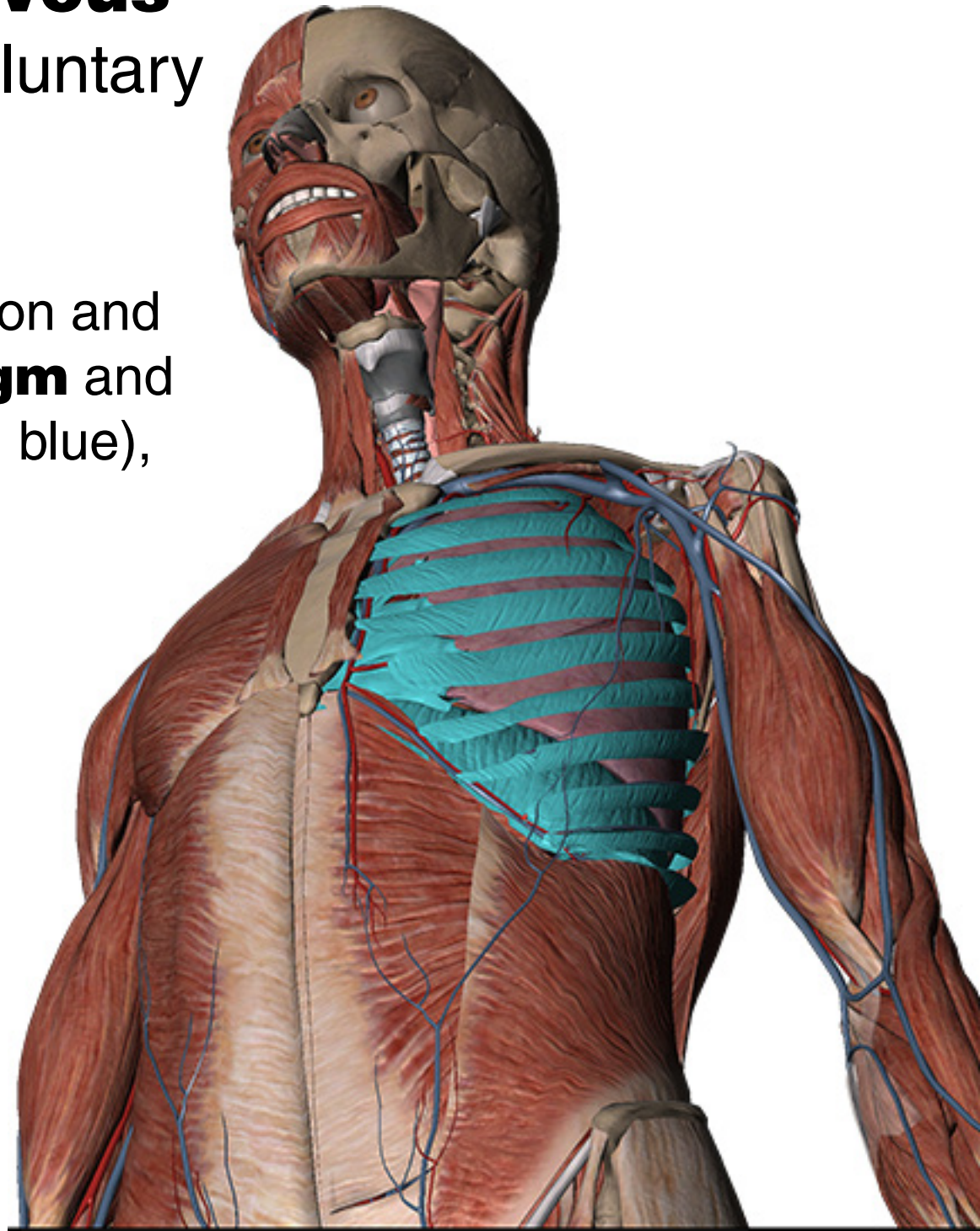


[www.visiblebody.com](http://www.visiblebody.com)

The **muscular and nervous systems** enable the involuntary breathing mechanism.

The main muscles in inhalation and exhalation are the **diaphragm** and the **intercostals** (shown in blue), as well as other muscles.

Exhalation is a passive action, as the lungs recoil and shrink when the muscles relax.



Share this slideshow!



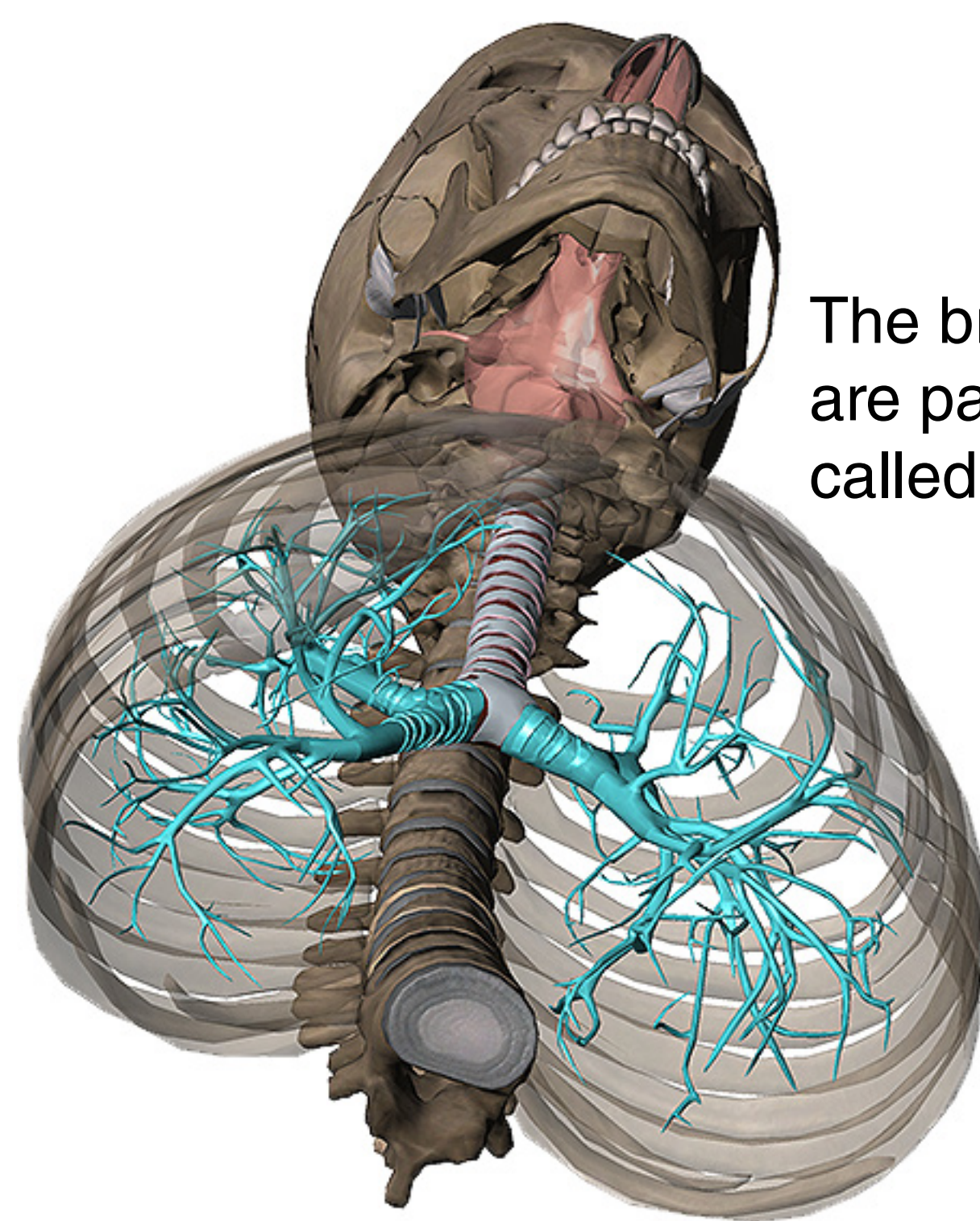
[www.visiblebody.com](http://www.visiblebody.com)



# Quiz Time!

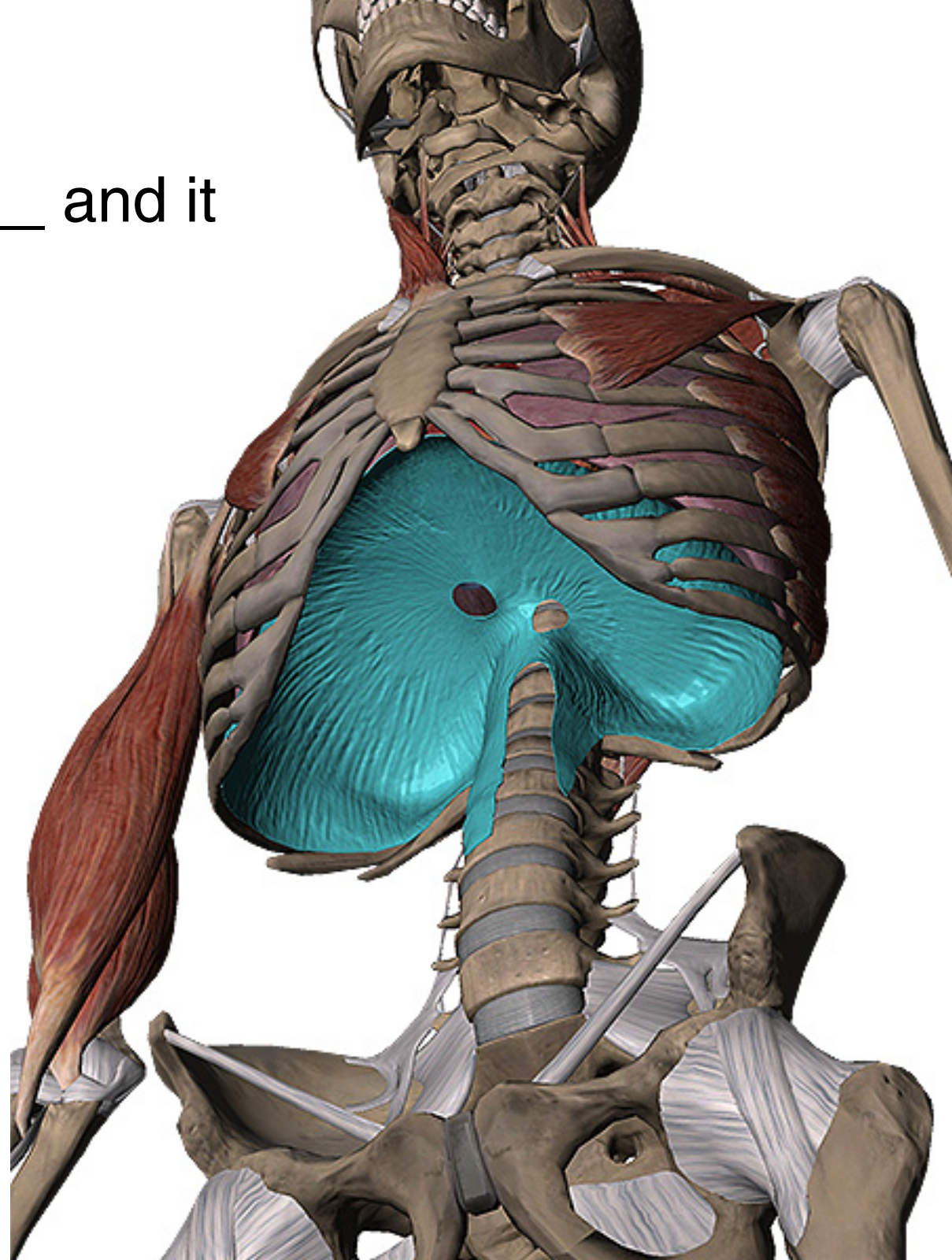
The bronchi and bronchioles are part of an overall structure called the \_\_\_\_\_.

- a. bronchus
- b. branches
- c. lung tree
- d. respiratory tree



This muscle is the \_\_\_\_\_ and it is involved in breathing.

- a. external intercostal
- b. diaphragm
- c. internal intercostal
- d. thoracic cage



answer: b

# 3D Human Anatomy Atlas 2

All the images and most of the text in this eBook came from Visible Body's 3D Human Anatomy Atlas 2—an encyclopedic anatomical reference for human anatomy.

Content in the app includes:

- 3400+ anatomical structures shown in real 3D, accompanied by pronunciations and detailed definitions.
- Rotate, zoom in/out, pan, hide, and add structures to see the anatomy from any angle.
- Hundreds of preset Views, which you can customize and save.
- Available for:

PC/Mac

iPad

- Coming soon for:

iPhone

Android

**VISIBLE**  **BODY**®

