

Using
Ebsco Discovery Service
(EDS) search engine
to access e-resources

About EDS

- **EDS stands for Ebsco Discovery Service**
- **A product of EbscoHost**
- **A one stop search engine that allows you to search for resources through multiple databases in the library portal simultaneously**

About this Guideline

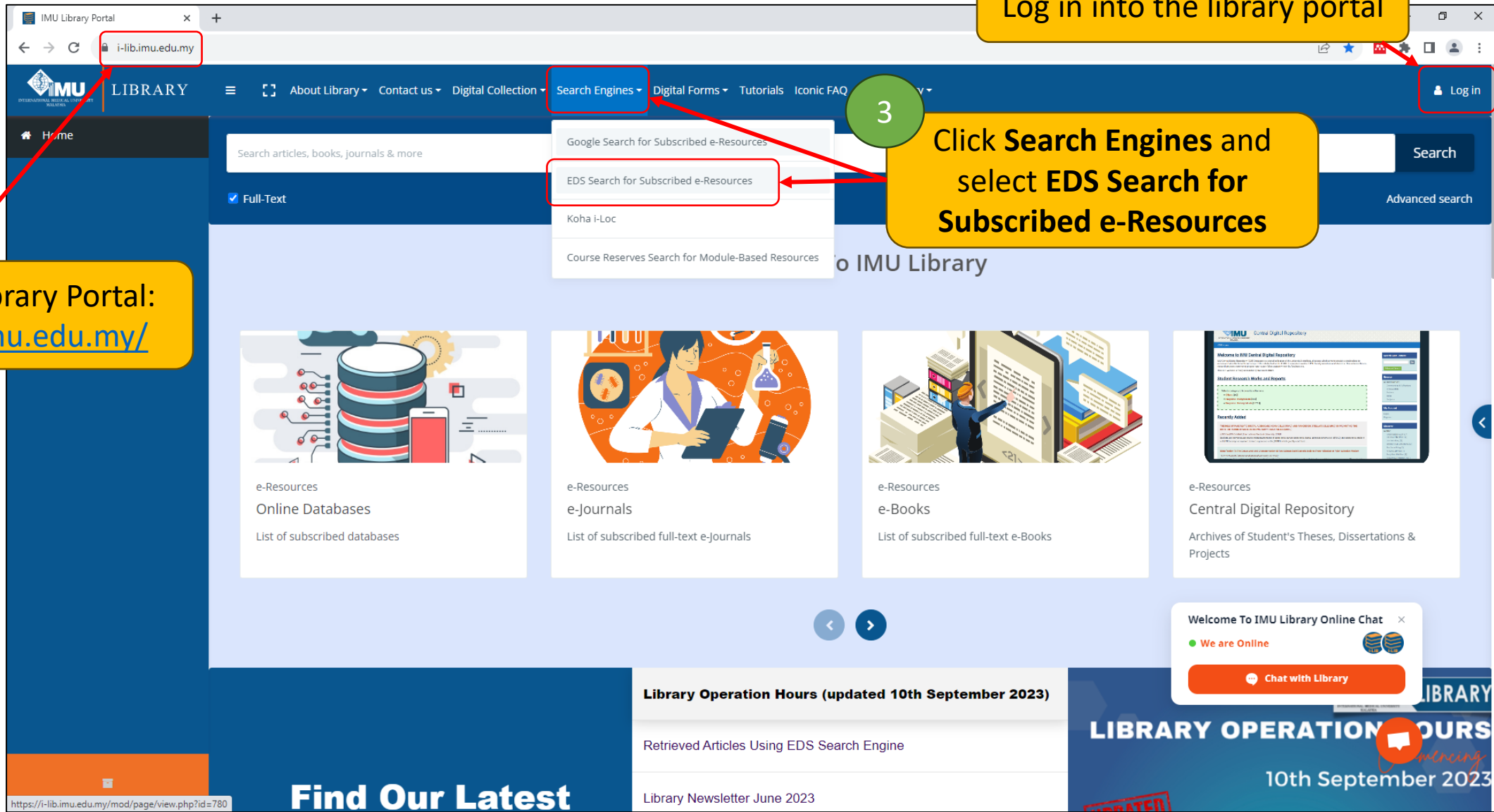
Includes 5 parts:

- 1. Register / Login in into personalized account**
- 2. Retrieve full text papers through keyword(s)**
- 3. Access book / journal via title**
- 4. Build search using Grid / Concept Map**
- 5. Access Supplemental sources**

1
Access IMU Library Portal:
<https://i-lib.imu.edu.my/>

2
Log in into the library portal

3
Click Search Engines and
select EDS Search for
Subscribed e-Resources



<https://i-lib.imu.edu.my/mod/page/view.php?id=780>

Find Our Latest

Library Operation Hours (updated 10th September 2023)

Retrieved Articles Using EDS Search Engine

Library Newsletter June 2023

LIBRARY OPERATION HOURS
10th September 2023

Welcome To IMU Library Online Chat
We are Online
Chat with Library

4

Type keyword in the search box and click **Search**

OR

Click **Search** to access the search engine main page with a blank search

IL QUIZ: Sem. 7 - NU | EDS: Search IMU E-Resources Co... | EBSCO Discovery Service

research-ebSCO-com.ezp2.imu.edu.my/c/06vbsl/search/advanced/search-options

MyEBSco Sign in

IMU
INTERNATIONAL MEDICAL UNIVERSITY
MALAYSIA

My dashboard

- Overview
- Projects
- Saved
- Searches
- Viewed

Research tools

- General search
- Publications
- Concept map
- Supplemental sources

Links

- IMU Library Portal
- Course Reserves
- Central Digital Repository

Your personalized space

Your created projects

Your saved searches

Your previous searches

Articles that you have read

books, journals & more

All fields

All fields

All fields

Basic search

Search

Clear all

Online full text

At my library

Peer reviewed

Date Range

- All time
- Past 12 months
- Past 5 years
- Past 10 years
- Custom range

Part 1:

**Register / Login in into
personalized account**

5

Click **MyEBSCO**

IMU Library Portal | EDS: Search IMU E-Resources Co | EBSCO Discovery Service

research-ebSCO-com.ezp2.imu.edu.my/c/o6vbsl/

IMU
INTERNATIONAL MEDICAL UNIVERSITY
MALAYSIA

My dashboard

- Overview
- Projects
- Saved
- Searches
- Viewed

Research tools

- General search
- Publications
- Concept map
- Supplemental sources

Links

IMU Library Portal
<https://research-ebSCO-com.ezp2.imu.edu.my/c/o6vbsl/my-preferences>

Search articles, books, journals & more

Search articles, books, journals, eBooks, and more

Online full text | At my library

MyEBSCO

Hello, researcher!

[My preferences](#)

MyEBSCO account benefits

- Create projects
- Download eBooks
- Save your research
- Sync to the mobile app

[Create an account](#)

[Sign in to MyEBSCO](#)

Privacy policy | Terms of use | Institutional logout | Manage my cookies
© 2023 EBSCO Industries, Inc. All rights reserved

6

Click **Create an account** to register (see next slide)

OR

Sign in to MyEBSCO (account has been registered previously)

Register

EBSCO [EBSCO support site](#)

Create your account

Already have an account? [Sign in.](#)

7 Enter your details
Note: Please register using IMU email address

8 Tick the acceptance box

9 Click **Create account**

First name

Last name (optional)

Email address

Create password [Show](#)

- ✗ One number
- ✗ One special character
- ✗ Do not include email address
- ✗ Six character minimum
- ✗ Do not include username
- ✗ Do not include common phrases

Personal data retention and usage

Yes, I consent to the collection of this personalized data which will allow EBSCO to provide me with a personal account. I understand the processing of my personal data is covered under my institution's contract with EBSCO. I acknowledge that EBSCO will collect and process my personal data including the categories and purposes of use for such data as described in EBSCO's [Privacy Policy](#) and [What information is collected and how it is used.](#)

Create account

Account benefits

- Sync with the mobile app
Take your research on the go. Search, read and listen in the app!
[iOS](#) | [Android](#)
- Download eBooks
Access thousands of eBook titles to read and download.
- Create projects
Keep your research organized within custom projects.
- Save your research
Never lose your search queries, or documents again.

Log in

The screenshot shows the EBSCO login interface. At the top left is the EBSCO logo, and at the top right is a link to the EBSCO support site. The main heading is "Welcome back" with a sub-link "Don't have an account? [Sign up.](#)". Below this is a "Continue with Google" button, followed by the text "Or continue with username/email". The login form contains a "Username or email address" field with the value "RazmanShahRazali@imu.edu.my", a "Password" field with masked characters, and a "Show" link. A "Forgot your password?" link is located below the password field. A blue "Sign in" button is at the bottom of the form. Two yellow callout boxes with green circles containing numbers 10 and 11 provide instructions: "10 Enter IMU email address and password" points to the username field, and "11 Click Sign in" points to the "Sign in" button. At the bottom of the page are links for "Help", "Privacy policy", and "Terms of use", a "Manage my cookies" link, and a copyright notice: "© 2023 EBSCO Information Services, LLC. All rights reserved."

Part 2:

**Retrieve full text papers through
keyword(s)**

The image shows a screenshot of the EBSCO Discovery Service search interface with several annotations. The browser tabs include 'IMU Library Portal', 'EDS: Search IMU E-Resources Co', and 'EBSCO Discovery Service'. The URL is 'research-ebSCO-com.ezp2.imu.edu.my/c/o6vbsl/search/advanced/search-options'. The search results table contains the following entries:

AND	breastfeeding	All fields
AND	wom#n	All fields
AND	child*	All fields
OR	infant	All fields
NOT	toddlers	All fields

Annotations include:

- Exact phrase**: A yellow box pointing to the search term "breast cancer" in the first row.
- Boolean operator**: A large yellow box containing 'AND', 'OR', and 'NOT', with arrows pointing to the operator dropdowns in the second, third, and fourth rows.
- Truncation**: A yellow box pointing to the search term 'wom#n' in the second row.
- Wildcard**: A yellow box pointing to the search term 'child*' in the third row.
- Click Search**: A yellow box pointing to the 'Search' button in the 'Basic search' section, with a green circle containing the number '13' next to it.
- Click Online full text / At my library / Peer reviewed based on your preference**: A large yellow box pointing to the 'Online full text' checkbox in the 'Search options' section, with a green circle containing the number '12' next to it.

The 'Search options' section includes:

- Online full text
- At my library
- Peer reviewed
- Date Range**
 - All time
 - Past 12 months
 - Past 5 years
 - Past 10 years

IMU Library Portal

EDS: Search IMU E-Resources Co

("breast cancer") AND (breastfee

research-ebSCO-com.ezp2.imu.edu.my/c/o6vbsl/results?autocorrect=y&limiters=FT%3AY&q=%28"breast%20cancer"%29%20AND%20%28breastfeeding%29%20AND%20%28wom%23n%29%20AND%20%28child%2A%29%20OR%20%28infant%29...

IMU INTERNATIONAL MEDICAL UNIVERSITY MALAYSIA

My dash

14

Click Access options

15

Click Full Text Finder

To Save your search

Peer reviewed | Academic Journal

Maternal lifestyle and nutrient intakes during pregnancy and exclusive breastfeeding in relation to risk factors for breast cancer: The Japan Environment and Children's Study

Keywords *Breastfeeding*; Pregnancy; Birth weight; Dietary fiber; Smoking; *Breast cancer*; Cohort study Highlights * This study examined the associations of maternal lifestyles with *breastfeeding*. * Smoking during pregnancy has a...

Subjects: [Oncology, Experimental -- Health aspects](#); [Pregnancy -- Health aspects](#); [Breast feeding -- Health aspects](#); [Cancer -- Prevention -- Research](#); [Infants -- Health aspects](#); [Children -- Health aspects](#); +3 more

Published in: Preventive Medicine, 2023, Gale Academic OneFile

By: Minami, Yuko; Miyashita, Minoru; Ishida, Takanori; Fujita, Megumi; Hamada, Hiroataka; Saito, Masatoshi; +2 more

Access options

View details

Full Text Finder

Periodical

202 [Rezension] Horsch, John, *Infant* baptism

Subjects: [religion](#); [Article](#)

Published in: Kunze, Johannes: Theologisches Literaturblatt. 41 1920, 1920, DigZeitschriften

By: Kunze, Johannes

Cite

Add to project

Share

Download

Full Text Options:

- i. **Online full text** (in web format)
- ii. **PDF** (provided by EbscoHost database)
- iii. **Full Text Finder** (access to the resource from multiple databases in the library portal) – See next slide

Access options

View details

Online full text

PDF

Full Text Finder



Maternal lifestyle and nutrient intakes during pregnancy and exclusive breastfeeding in relation to risk factors for breast cancer: The Japan Environment and Children's Study

Minami, Yuko. *Preventive Medicine* Volume: 168 (2023) ISSN: 0091-7435 Online ISSN: 1096-0260



Full Text Finder Results

Resources Located for this Citation

- [Link to find Full Text at Elsevier's ClinicalKey](#) 01/01/2007 - present
- [Check for full text at the publisher's site.](#) 01/01/1995 - present
- [Check for full text at the publisher's site.](#) 01/01/2007 - present
- [Find this article in full text from EBSCOhost SmartLinks+](#) 01/01/1995 - present
- [Find this article in full text from EBSCOhost SmartLinks+](#) 01/01/2007 - present
- [View this article at Science Direct](#) 01/01/1995 - present
- [Find Preventive Medicine from ScienceDirect Subject Collections - Health Sciences.](#) 01/01/1995 - present
- [Find Preventive Medicine from ClinicalKey eJournals.](#) 01/01/2007 - present

Google Scholar

[Search for more info on this title in Google Scholar](#)

16

Access full text through the library subscribed databases

IMU Library Portal | EDS: Search IMU E-Resources Co | ("breast cancer") AND (breastfeed | Maternal lifestyle and nutrient int | Maternal lifestyle and nutrient int |

www-clinicalkey-com.ezp2.imu.edu.my/#!/content/playContent/1-s2.0-S0091743523000269?returnurl=null&referrer=null

ClinicalKey® All Types Type your search Search English CME/MOC Login Register

Browse Tools

FULL TEXT ARTICLE

Maternal lifestyle and nutrient intakes during pregnancy and exclusive breastfeeding in relation to risk factors for breast cancer: The Japan Environment and Children's Study

Yuko Minami, Minoru Miyashita, Takanori Ishida, Megumi Fujita, Hiroataka Hamada, Masatoshi Saito, Takahiro Arima and Nobuo Yaegashi
Preventive Medicine, 2023-03-01, Volume 168, Article 107446, Copyright © 2023 Elsevier Inc.

Introduction
Methods
Study subjects and data collection
Exposures and outcomes
Statistical analysis
Results
Discussion
Contributors
CRediT authorship contribution statement
References

Abstract

Breastfeeding has many benefits for infant growth and maternal health, such as reducing breast cancer risk. However, data on maternal factors influencing breastfeeding are insufficient. To clarify the associations between maternal lifestyle and diet during pregnancy and exclusive breastfeeding (EBF), we conducted a prospective study of pregnant women within the framework of the Japan Environment and Children's Study (a nationwide birth cohort study). Of 97,413 pregnant women recruited between January 2011 and March 2014, 27,775 with a singleton first live birth whose dietary data during pregnancy and lactation data were complete were eligible. Using logistic regression, we evaluated the associations between lifestyle factors including smoking and prepregnancy body mass index and intake of nutrients (macronutrients, isoflavones, and dietary fiber), some of which are known risk factors of breast cancer, and EBF for one month postpartum (initiation of EBF). To investigate the associations of these factors with EBF for 6 months (continuation of EBF), 9582 women who had successfully completed one-month EBF were further followed up. Smoking and prepregnancy obesity were inversely associated with the initiation and continuation of EBF. Intakes of protein, fat, isoflavone, and dietary fiber were positively associated ($p_{\text{trend}} = 0.0001$ for dietary fiber), and carbohydrate intake was inversely associated with the initiation of EBF. Dietary fiber intake was also associated with the continuation of EBF ($p_{\text{trend}} = 0.048$). These findings indicate that maternal lifestyles during pregnancy affect lactation performance. Lifestyle adjustments during pregnancy may have favorable effects on maternal and children's health through successful breastfeeding.

Preventive Medicine
Volume 168
Copyright © 2023 Elsevier Inc.
Get rights and content

17

Download PDF

Part 3:

Access book / journal via title

IMU Library Portal | EDS: Search IMU E-Resources Co | ("breast cancer") AND (breastfee: x

research-ebSCO-com.ezp2.imu.edu.my/c/o6vbsl/results?autocorrect=y&limiters=FT%3AY&q=%28"breast%20cancer"%29%20AND%20%28breastfeeding%29%20AND%20%28wom%23n%29%20AND%20%28child%2A%29%20OR%20%28infant%29...

IMU INTERNATIONAL MEDICAL UNIVERSITY MALAYSIA

My dashboard

- Overview
- Projects
- Saved
- Searches
- Viewed

Research tools

- General search
- Publications**
- Concept map
- Supplemental sources

Links

- IMU Library Portal
- Course Reserves
- Central Digital Repository

("breast cancer") AND (breastfeeding) AND (wom#n) AND (child*) OR (infant) NOT (toddlers)

All filters (1) | Online full text | Peer reviewed | All time

Advanced search

Peer reviewed | Academic Journal

Maternal lifestyle and nutrient intakes during pregnancy and exclusive *breastfeeding* in relation to risk factors for *breast cancer*: The Japan Environment and *Children's* Study

Keywords *Breastfeeding*; Pregnancy; Birth weight; Dietary fiber; Smoking; *Breast cancer*; Cohort study Highlights * This study examined the associations of maternal lifestyles with *breastfeeding*. * Smoking during pregnancy has a...

Subjects: [Oncology, Experimental -- Health aspects](#); [Pregnancy -- Health aspects](#); [Breast feeding -- Health aspects](#); [Cancer -- Prevention -- Research](#); [Infants -- Health aspects](#); [Children -- Health aspects](#); +3 more

Published in: Preventive Medicine, 2023, Gale Academic OneFile

By: [Minami, Yuko](#); [Miyashita, Minoru](#); [Ishida, Takanori](#); [Fujita, Megumi](#); [Hamada, Hiroataka](#); [Saito, Masatoshi](#); +2 more

Access options | View details

Full Text Finder

202 [Rezension] Horsch, John, *Infant* baptism

Subjects: [religion](#); [Article](#)

Published in: Kunze, Johannes: Theologisches Literaturblatt. 41 1920, 1920, DigZeitschriften

By: [Kunze, Johannes](#)

Access options | View details

Periodical

16-17 [Rezension] Horsch, John, *Infant* Baptism

Subjects: [religion](#); [Article](#)

Published in: Scheel, Otto: Theologische Literaturzeitung: Monatsschrift für das gesamte Gebiet der Theologie und Religionswissenschaft. 46

18

Click Publications

IL QUIZ: Sem. 7 - NU | EDS: Search IMU E-Resources Co | EBSCO Discovery Service | Publication Finder

publications-ebSCO-com.ezp2.imu.edu.my/?callbackurl=https%3A%2F%2Fresearch.ebSCO.com&custId=ns004320&groupId=main&lang=en&profileId=pfui

INTERNATIONAL MEDICAL UNIVERSITY

EBSCO | INTERNATIONAL MEDICAL UNIVERSITY
an EBSCOhost Experience

Search Home | Browse Databases | Browse Subjects

20 Click Search

19 Type title of book / journal

Browse according to database or subjects

Publication Finder for INTERNATIONAL MEDICAL UNIVERSITY

Title Contains Robbins Basic Pathology

All

Browse publications by name

A B C D E F G H I J K L M N O >

All AA AB AC AD AE AF AG AH AI AJ AK AL AM AN AO >

Browse Databases | Browse Subjects

EBSCO Support Site | Privacy Policy | Terms of Use

© 2023 EBSCO Industries, Inc. All rights reserved

Publication Finder for INTERNATIONAL MEDICAL UNIVERSITY

Title Contains Robbins Basic Pathology

All

- Refine results
- RESOURCES
- Book 1
- DATABASES
- ClinicalKey eBooks 1

Results: 1

Relevancy

1. Book

Robbins Basic Pathology

ISBN: 978-0-323-35317-5
Publisher: Elsevier
By: Kumar, Vinay
[View details](#)

Full Text Access

- [ClinicalKey eBooks 2018](#)

21

Access the book / journal via the provided link



Part 4:

**Build search using Grid / Concept
Map**

IMU Library Portal | EDS: Search IMU E-Resources Co | ("breast cancer") AND (breastfee: x

research-ebSCO-com.ezp2.imu.edu.my/c/o6vbsl/results?autocorrect=y&limiters=FT%3AY&q=%28"breast%20cancer"%29%20AND%20%28breastfeeding%29%20AND%20%28wom%23n%29%20AND%20%28child%2A%29%20OR%20%28infant%29...

IMU INTERNATIONAL MEDICAL UNIVERSITY MALAYSIA

My dashboard

- Overview
- Projects
- Saved
- Searches
- Viewed

Research tools

- General search
- Publications
- Concept map**
- Supplemental sources

Links

- IMU Library Portal
- Course Reserves
- Central Digital Repository

Advanced search

Filters: All filters (1) | Online full text | Peer reviewed | All time

Search query: ("breast cancer") AND (breastfeeding) AND (wom#n) AND (child*) OR (infant) NOT (toddlers)

Peer reviewed | Academic Journal

Maternal lifestyle and nutrient intakes during pregnancy and exclusive *breastfeeding* in relation to risk factors for *breast cancer*: The Japan Environment and *Children's* Study

Keywords: *Breastfeeding*; Pregnancy; Birth weight; Dietary fiber; Smoking; *Breast cancer*; Cohort study Highlights * This study examined the associations of maternal lifestyles with *breastfeeding*. * Smoking during pregnancy has a...

Subjects: [Oncology, Experimental -- Health aspects](#); [Pregnancy -- Health aspects](#); [Breast feeding -- Health aspects](#); [Cancer -- Prevention -- Research](#); [Infants -- Health aspects](#); [Children -- Health aspects](#); +3 more

Published in: Preventive Medicine, 2023, Gale Academic OneFile

By: [Minami, Yuku](#); [Miyashita, Minoru](#); [Ishida, Takanori](#); [Fujita, Megumi](#); [Hamada, Hiroataka](#); [Saito, Masatoshi](#); +2 more

Access options | View details

Full Text Finder

Periodical

16-17 [Rezension] Horsch, John, *Infant* baptism

Subjects: [religion](#); [Article](#)

Published in: Kunze, Johannes: Theologisches Literaturblatt. 41 1920, 1920, DigZeitschriften

By: [Kunze, Johannes](#)

Access options | View details

Periodical

16-17 [Rezension] Horsch, John, *Infant* Baptism

Subjects: [religion](#); [Article](#)

Published in: Scheel, Otto: Theologische Literaturzeitung: Monatsschrift für das gesamte Gebiet der Theologie und Religionswissenschaft. 46

22

Click Concept map

IL QUIZ: Sem. 7 - NU | EDS: Search IMU E-Resources Co | EBSCO Discovery Service | Concept Map main page - EBSCO

research-ebSCO-com.ezp2.imu.edu.my/conceptmap

Discover deep knowledge

tuberculosis

tuberculosis
Infection transmitted by inhalation or ingestion of tubercle bacilli and manifested in fever and small lesions (usually in the lungs but in various other parts of the body...

Avian tuberculosis
Birds disease.

Kidney tuberculosis
Urogenital tuberculosis that results in formation of granulomas located in kidney.

Latent tuberculosis
A diagnosis of latent tuberculosis, also called latent tuberculosis infection means a patient is infected with *Mycobacterium tuberculosis*, but the patient does not have ...

Mycobacterium tuberculosis

23

Type topic in search box

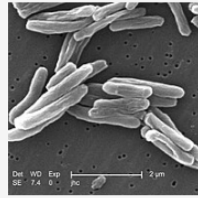
24

Click related topics

Selection of concept presentations
Default presentation is in **Grid** format



tuberculosis



Infection transmitted by inhalation or ingestion of tubercle bacilli and manifested in fever and small lesions (usually in the lungs but in various other parts of the body in acute stages)
Domain: Health and medicine
Concept class: Medical Condition

Group by
Add to search Relationships

Synonyms: In the clinic. Tuberculosis, tuberculous abscess, MTB, pulmonary tuberculosis, phthisis pulmonalis, [Show more](#)

Search builder

Selected concepts

Add a concept

SEE FULL RESULTS

CONTENT PREVIEW

tuberculosis: has kind

lupus vulgaris Tuberculosis of the skin; appears first on the...	miliary tuberculosis Acute tuberculosis characterized by the...	MDR-TB Multi-drug-resistant tuberculosis is a form ...	Mycobacterium tuberculosis complex The Mycobacterium tuberculosis complex i...	Pott's disease TB of the spine with destruction of...
Explore concept Add to search	Explore concept Add to search	Explore concept Add to search	Explore concept Add to search	Explore concept Add to search

tuberculosis: drug used for treatment

morinamide Morinamide is a drug	cycloserine An antibiotic that is	ethionamide Ethionamide is an	ethambutol Ethambutol is a	viomycin A basic polypeptide
---	---	---	--------------------------------------	--

Explore available concepts

Concept map in Map format

25 Click any topic, then click **Add to search**. The search is added into the Search builder

26 Click **See Full Results** for full text access
OR
Content preview for viewing purpose

Click to change Boolean operator
AND
OR
NOT

weight loss

Weight loss, in the context of medicine, health, or physical fitness, refers to a reduction of the total body mass, due to a mean loss of fluid, body fat or adipose tissue or lean mass, namely bone mineral deposits, muscle, tendon, and other connective tissue.

Domain: Health and medicine
Concept class: Concept
Relationships:
tuberculosis symptoms weight loss

Explore concept
Add to search

Selected concepts
weight loss AND tuberculosis
SEE FULL RESULTS
CONTENT PREVIEW

Map Grid

isoniazid pericardial tuberculosis

viomycin

miliary tuberculosis scrofula infection infectious disease airborne transmission

Latent tuberculosis MDR-TB

weight loss tuberculosis lupus vulgaris

Notifiable disease Mycobacterium tuberculosis complex tuberos sclerosi

DSCAM Mycobacterium ca Aminosalicic acid Mycobacterium tuberculosis

Endemic diseases Pott's disease fever pyrazinamide Tobacco smoking

Part 5:

Access Supplemental sources

IL QUIZ: Sem. 7 - NU | EDS: Search IMU E-Resources Co... | EBSCO Discovery Service

research-ebSCO-com.ezp2.imu.edu.my/cj/o6vbsl/search/advanced/search-options

IMU
INTERNATIONAL MEDICAL UNIVERSITY
MALAYSIA

My dashboard

- Overview
- Projects
- Saved
- Searches
- Viewed

Research tools

- General search
- Publications
- Concept map
- Supplemental sources**

Links

- IMU Library Portal
- Course Reserves
- Central Digital Repository

Search articles, books, journals & more

All fields

AND All fields

AND All fields

+ Add fields

Basic search

Search

Search options

Clear all

Peer reviewed

Date Range

- All time
- Past 12 months
- Past 5 years
- Past 10 years
- Custom range

27

Click Supplemental sources

IL QUIZ: Sem. 7 - NU | EDS: Search IMU E-Resources Co | Supplemental sources - EBSCO | tuberculosis - Search | ScienceDir

research-ebSCO-com.ezp2.imu.edu.my/c/o6vbs/supplemental-sources

Search articles, books, journals & more

MyEBSCO

tuberculosis

2:35 PM

Send search to...

- Access Science
- Nature
- ScienceDirect
- SpringerLink
- UpToDate
- Central Digital Repository

ClinicalKey
ClinicalKey

Nature
Nature

ScienceDirect
ScienceDirect

UpToDate
UpToDate

e-Books - Library Portal

BMJ Best Practice
BMJ Best Practice

ClinicalKey for Nursing
ClinicalKey for Nursing

Ovid
Ovid

SpringerLink
SpringerLink

Laws of Malaysia
Laws of Malaysia

e-Journals - Library Portal

My dashboard

Publications

Concept map

Supplemental sources

Links

IMU Library Portal

Course Reserves

Central Digital Repository

28

Send your search to individual database

Note: Only the listed databases include this feature

Access database available in the library portal